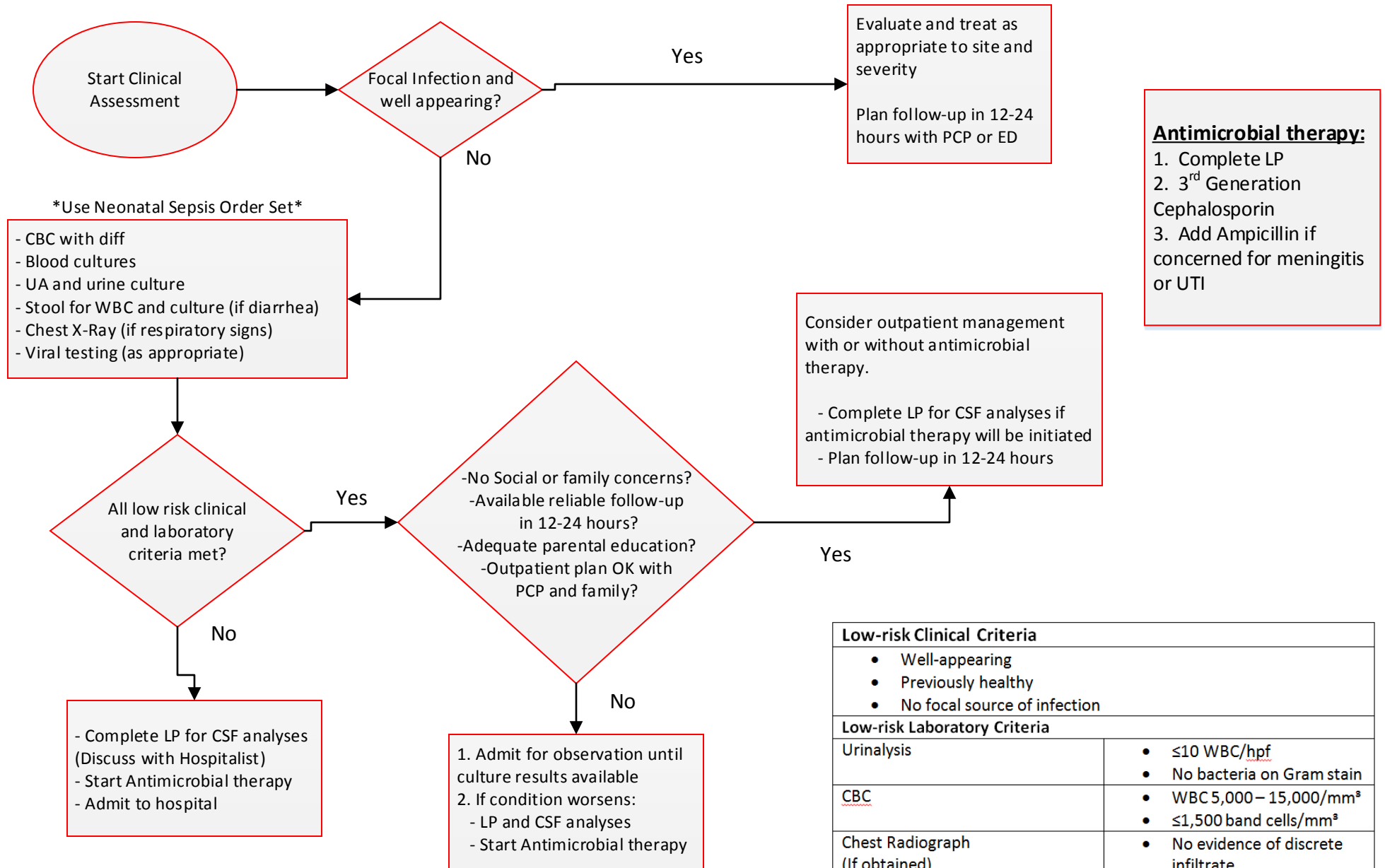


Fever in Young Infants (age 29-60 Days)

Temp ≥ 38.0 or < 36.0



Adapted from Cincinnati Children's Hospital Medical Center. (2010)
Guideline for fever of uncertain source in infants 60 days of age or less.

Low-risk Clinical Criteria	
<ul style="list-style-type: none"> Well-appearing Previously healthy No focal source of infection 	
Low-risk Laboratory Criteria	
Urinalysis	<ul style="list-style-type: none"> ≤ 10 WBC/hpf No bacteria on Gram stain
CBC	<ul style="list-style-type: none"> WBC 5,000 – 15,000/mm³ $\leq 1,500$ band cells/mm³
Chest Radiograph (If obtained)	<ul style="list-style-type: none"> No evidence of discrete infiltrate
Stool Smear (when diarrhea present)	<ul style="list-style-type: none"> Negative for blood ≤ 5 WBC/hpf